

# SHSM is for you if...

you are interested in  
one or more of:

- Earning valuable sector skills
- Graduating with a special designation
- Making connections in the Manufacturing sector

Or...

if you are planning to:

- Go to University
- Go to College
- Become an Apprentice
- Go to the Work World



Employers say...  
"You're hired!"



# SHSM Careers

in many industries:

- Advanced Manufacturing
- Mould / Tool / Die
- Industrial / Mechanical / Engineering
- Electrical
- Product Development
- Precision Metal Cutting
- Welding
- Sales
- Integrated Manufacturing Systems
- Information Technology
- Robotics & Control Systems
- Architecture

in many careers:

- Millwright
- Robotics Engineer
- Precision Machinist
- Software Developer
- Mould Designer
- Welder
- CAD Designer
- Manufacturing Technologist
- Technical Sales Specialist



**SHSM Manufacturing Millwright**  
**Assumption College Catholic High School**

For more information contact Student Services

**519-256-7801**

<https://www.wecdsb.on.ca/schools/assumptionhs>

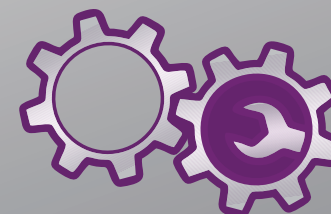
Specialist High Skills Major

# Manufacturing Millwright

**Assumption College  
Catholic High School**



- Customized High School Experience
- Ministry of Education Red Seal
- Advanced Employer Standing
- Valuable Practical Experience
- Industry Recognized Certifications



**Student Success is the mandate of the  
Specialist High Skills Major**

# Manufacturing Millwright

focus at Assumption College  
Catholic High School

## Explore exciting engineering skills

Including but not limited to:

- Tool / Die
- Mechanical Engineering
- Mold Making •



## Get valuable experience through partnerships with:

Sector professionals (ie. in engineering,  
fabrication, programming) and other  
forward thinking engineering and  
business community members.

*"Learning together in faith & service."*

## When can I start my SHSM?

The SHSM is open to all students. Entry should occur prior to a student's grade 11 year, with special emphasis on scheduling a two credit co-operative placement in the computer engineering / manufacturing sector.



WINDSOR-ESSEX CATHOLIC  
DISTRICT SCHOOL BOARD

## What skills & certifications will I earn?

**Earn seven of these compulsory  
and additional certifications:**

- Standard First Aid
- CPR Level C
- WHMIS Certification
- Health & Safety (basic)
- Electrical Safety (basic)
- Project Management
- CAD / CAM
- Leadership Skills

## What courses do I need?

Whether you are going to University, College, the World of Work or becoming an Apprentice, there is a course choice for you. Refer to the pathway chart below to help you select courses that are right for you.

Course Choices	POST SECONDARY PATHWAYS FOR SHSM		
	College or Apprenticeship	University	Workplace
<b>Grade 11 Majors</b> Choose a minimum of 2 courses (by pathway).	TMJ3C Manufacturing	SCH3U Chemistry	TTJ3O Tech Design  TMJ3E Manufacturing
	TMJ3E Manufacturing	SPH3U Physics	
	TMJ3M Manufacturing	TDJ3M Tech Design	
	TDR3M Architectural Design	TDR3M Architectural Design	
	TGJ3M Communications	TGJ3M Communications	
	TDJ3M Tech Design	TMJ3M Manufacturing	
<b>Grade 12 Majors</b> Choose a minimum of 2 courses (by pathway).	SCH4C Chemistry	MCV4U Calculus	TDJ4O Tech Design
	SPH4C Physics	MHF4U Advanced Functions	
	SCH4C Chemistry	SCH4U Chemistry	
	SPH4C Physics	SPH4U Physics	
	TDJ4M Tech Design	TDJ4M Tech Design	
	TDR4M Architectural Design	TDR4M Architectural Design	
<b>Co-operative Education</b>	All students must take a minimum of two periods (placement equivalent to 2 credits or a half day) of co-op		